



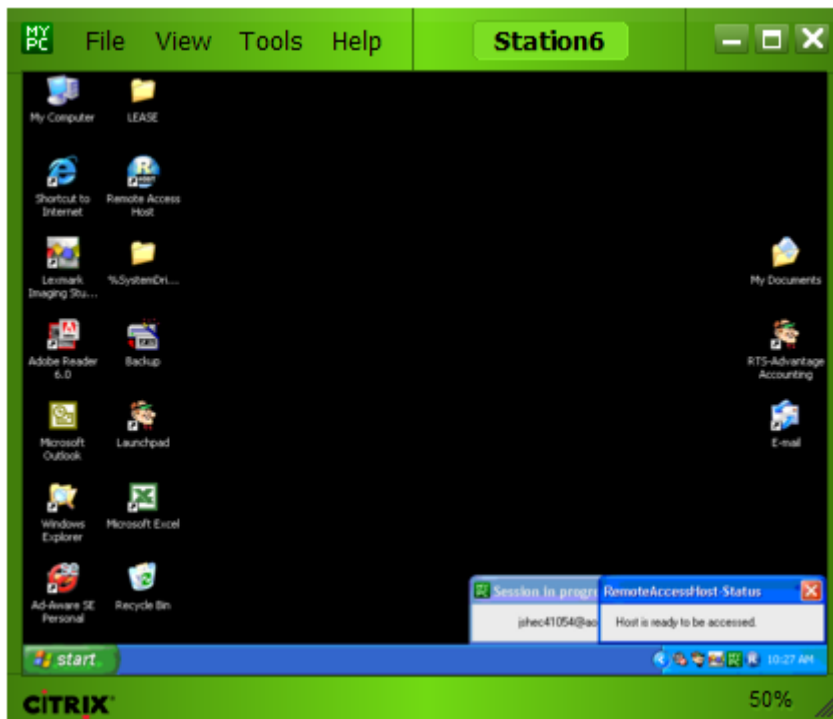
Date : Friday, April 27, 2007

Subject : Printing Advantage Reports Through GoToMyPC.COM

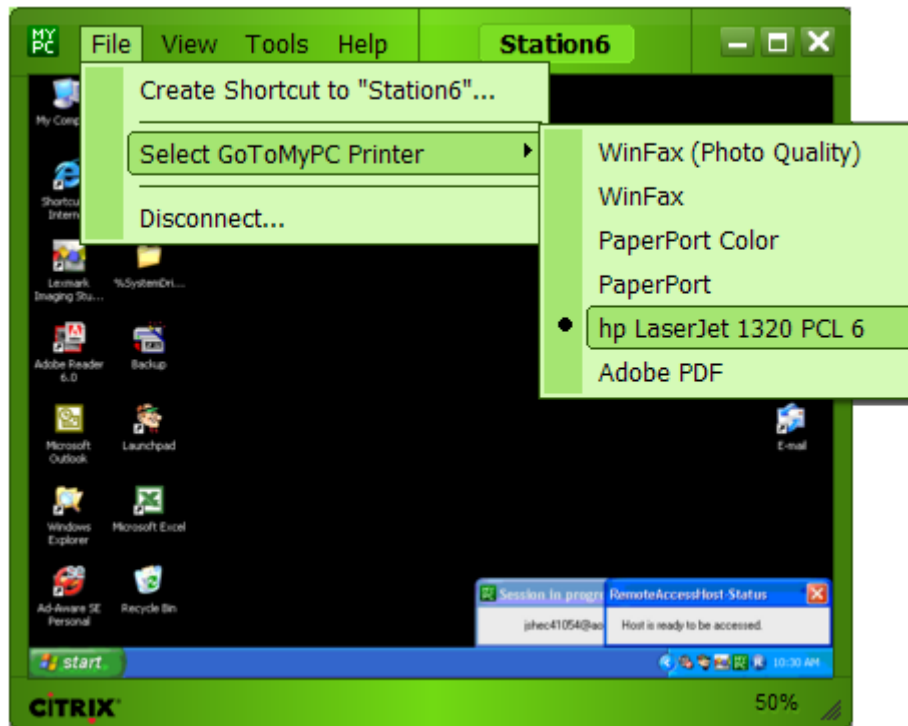
After establishing a GoToMyPC.COM account and installing their software on your remote and server computers, you can print Advantage v4.0 reports to your remote printer through GoToMyMyPC.COM.

Here's how:

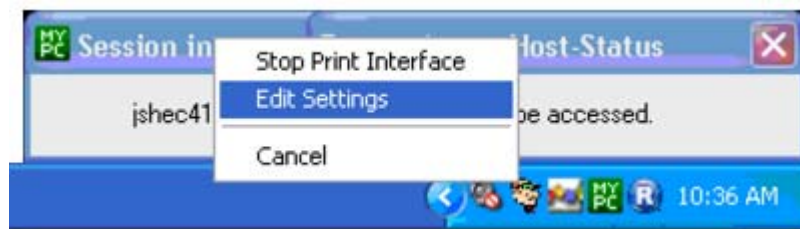
1. Logon to the server through your GoToMyPC account and internet connection





2. Click on **File**, select **GoToMyPC Printer** and printer attached to your remote PC (*printer illustrations*)

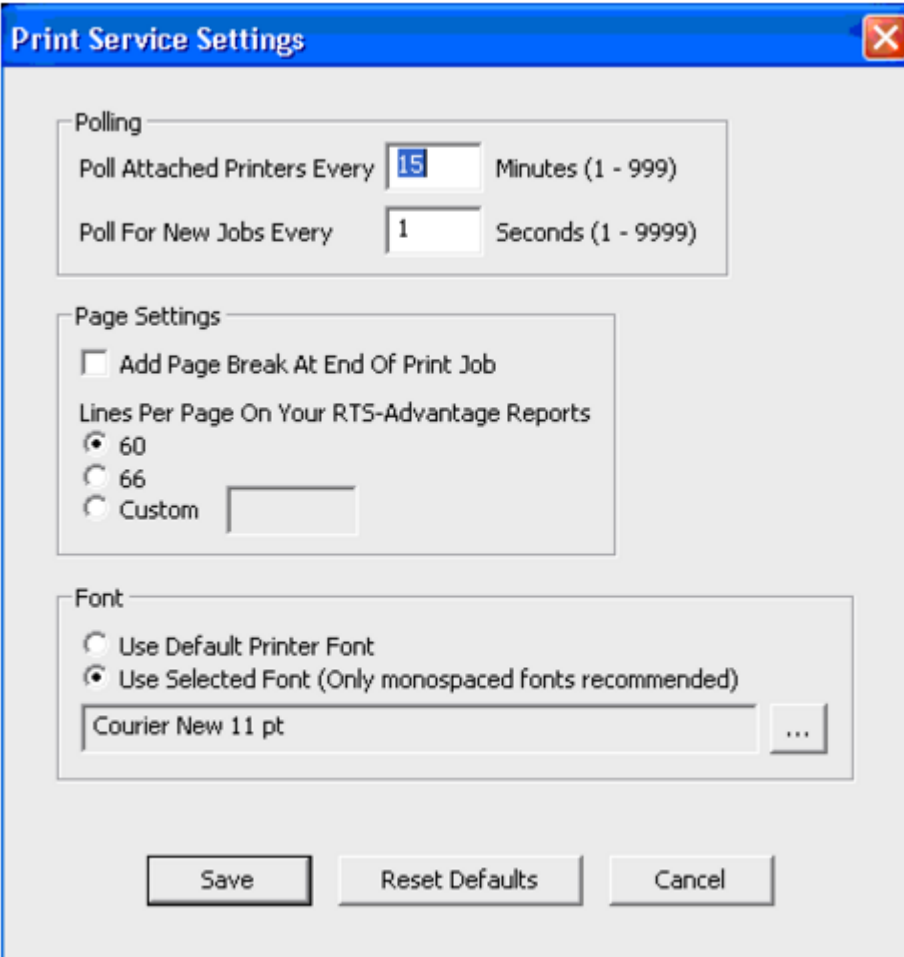


3. Right click on the **RTS-Advantage Windows Printer Interface** icon  in the system tray and select the **Edit Settings** option



4. Change the "15" in the **Poll Attached Printers Every...Minutes** prompt to "1" to shorten the time before Advantage recognizes and you can print Advantage v4.0 reports to your GoToMyPC Printer

- 5a. If your remote GoToMyPC Printer is an ink jet or laser printer, click on "60" beneath the "Lines Per Page On Your RTS-Advantage Reports, or
- 5b. If your remote GoToMyPC Printer is a dot matrix printer, click on "66" beneath "Lines Per Page On Your RTS-Advantage Reports", or
- 5c. If your remote GoToMyPC ink jet or laser printer does not paginate correctly when set to "60" Lines Per Page..., click on "66" beneath "Lines Per Page On Your RTS-Advantage Reports"
6. Select the **Use Selected Font (Only monospaced fonts recommended)** option
- 7a. If your remote GoToMyPC Printer is an ink jet or laser printer, click on the option button  and select **Courier New 11 pt** from the pull down list, or
- 7b. If your remote GoToMyPC Printer is a dot matrix printer, click on the option button  and select the **Use Default Print Font** option



Print Service Settings

Polling

Poll Attached Printers Every Minutes (1 - 999)

Poll For New Jobs Every Seconds (1 - 9999)

Page Settings

Add Page Break At End Of Print Job

Lines Per Page On Your RTS-Advantage Reports

60

66

Custom

Font

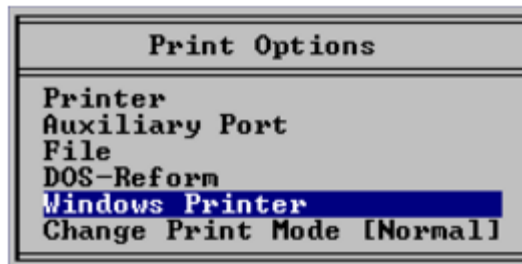
Use Default Printer Font

Use Selected Font (Only monospaced fonts recommended)

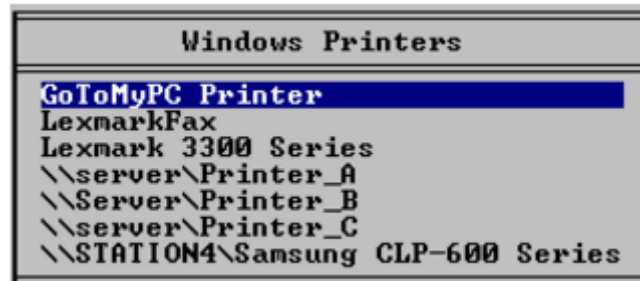
8. Save your changes

Except for changes in computers or printers, these eight steps should not have to be repeated.

9. To print a report from Advantage v4.0 to your GoToMyPC Printer, select the **Windows Printer** option in the **Print Options** window



10. Then select the **GoToMyPC Printer** option in the **Windows Printers** window



11. Before ending your remote GoToMyPC connection to the server, right click on the **RTS-Advantage Windows Printer Interface** icon in the system tray and select the **Edit Settings** option
12. Change the **Poll Attached Printers Every...Minutes** prompt to "15"
13. End your remote GoToMyPC connection to the server ■